



## Baltic Taucher II



### Technical data

<b>Basic data</b>	Vessel type	Multi purpose- / research- / diving vessel
	Year of built	1978
	Yard	Voldnes Skipsverft, Norway
	Port of registry	Rostock
	Flag	Germany
	Call sign	DECT2
	IMO-No.	9096387
	Class	RINA
<b>Main dimensions</b>	Length o.a.	29.00 m
	Breadth	6.70 m
	Draft	2,80 m
	Gross tonnage	146
<b>Machinery &amp; propulsion</b>	Main engine	Volvo Penta D16MH
	Power	404 kW
	Propulsion	Controllable pitch propeller
	Bow thruster	n.a.
	Genset	2 x 62 kW



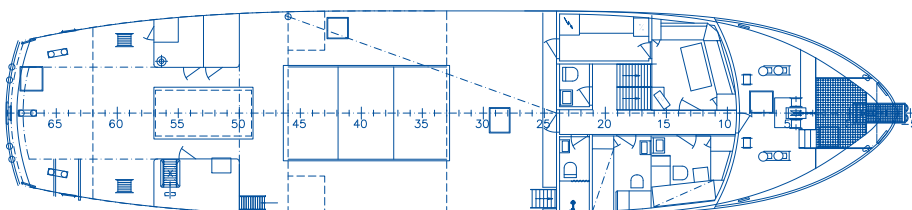
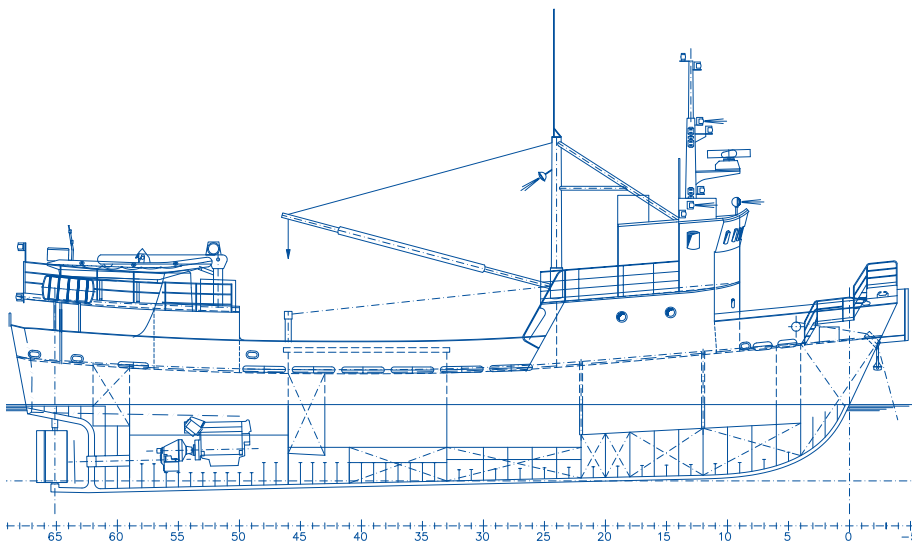
## Baltic Taucher II

### Technical data

<b>Performance</b>	Service speed	8,5 kn
	Max. speed	11 kn
	Average consumption	serv.: 45 l/h - max.: 90 l/h - 4-point-mooring: 125 l/d
<b>Tank capacities</b>	Fuel	10.5 m <sup>3</sup>
	Fresh water	10 m <sup>3</sup>
<b>Deck capacity</b>	Main deck	80 m <sup>2</sup>
	Additional areas	n.a.
<b>Accommodation</b>	Crew	4 (2 x 1; 1 x 2)
	Passenger	10 (3 x 2; 1 x 4)
	Office	yes
<b>Equipment</b>	Communication	GMDSS, portable VHF/UHF radio, satellite - voice and data, GSM - voice and data, internet
	Nautical	AIS, radar - ARPA, ECDIS/ECS, DGPS, autopilot, echo sounder Positioning system, VHF D-finder
	Deck	Anchor capstan (fwd), capstan (aft)
	Lifting	Derrick, SWL 4 mt at 8 m MOB davit, SWL 0,9 mt MOB davit, SWL 0,225 mt
	Daughter craft	RIB "Bombard" 6 m, 100 hp
	<b>Anchorage</b>	4-Point mooring

### Technical drawings

Side view / Top view main deck / Top view bridge deck







## Baltic Taucher II – Diving Equipment

### Technical data

<b>Deck decompression chamber</b>	Two compartment DDC with two way communication according IMCA design standards. The main lock can be used for 2 patients laying down on a stretcher or 3 patients in sitting position. In emergency situations, the entrance lock can also be used as treatment chamber.	
	LOA	3500 mm
	Diameter	1600 mm
	Type	Twin lock
	Length entrance lock	1100 mm
	Length main chamber	2400 mm
	Door diameter	700 mm
	Heating system	Tube heat system
	Working pressure	5,0 bar (6 bar absolute)
	Air	external LP/ HP air supply
Oxygen	external O <sub>2</sub> supply	
	2 x BIBs in each lock	
	Classification	Lloyd's Register
<b>Dive control unit</b>	Dive panel	for three divers incl. penumo, approved by Lloyd's Register
	Communication	two way communication for three divers
	Video	Video control system for three divers incl. recording
	Internal communication	Deck camera unit, hard wire and radio communication to deck and bridge
<b>Dive equipment</b>	Dive helmets	3 x Kirby Morgan 27
	HP bottles	9 x 50L 200bar
	Compressor	L/W 280 E Compact 280 l/min + back-up compressor
	O <sub>2</sub> analysers	Hytech



Deck Decompression Chamber



Delta Flipper Anchors for 4-point Mooring



Diving Ladder



MOB-Davit with Jason's Cradle