



## Inspection class ROV "VALOR"



### Technical data

<b>Basic data</b>	Manufacturer	Seatronics
	Year of built	2020
	Length	860 mm
	Width	600 mm
	Height	550 mm
	Weight in air	~ 80 kg
	Depth rating	300 m
<b>Thrusters</b>	Number of horizontal thrusters	4 thrusters vectored at 45°
	Number of vertical thrusters	2 thrusters vectored at 30°
	Type of thrusters	RS485 controlled brushless DC thrusters, type SPE75
	Thrust forward/backward/lateral	71 kgf
	Thrust vertical	43 kgf
<b>Power supply</b>	Max. working current speed	2.5 kn
	System input voltage	3 Phase 415 V AC (operating range 373 – 456 V AC)
	System input current	20 A (base system)
	Power delivered to ROV	800 V DC, 10 kW base system
<b>Control unit</b>	Power deliverable to payload	software configured 12 V to 48 V @ max 3A per user port
	Weight control unit	~ 80 kg
	Display	1 x 17.3" rackmount HD monitor, 1 x rackmount HD touchscreen monitor
	Input device	topside controller c/w hand controller
	Pilot aids	very pilot friendly system, auto heading, auto depth, auto altitude, auto hover with pilot notch function, auto movement to point of interest, auto gridline survey



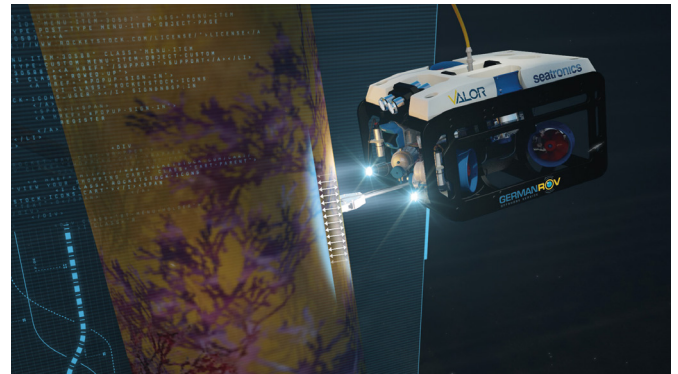
## Inspection class ROV "VALOR"

### Technical data

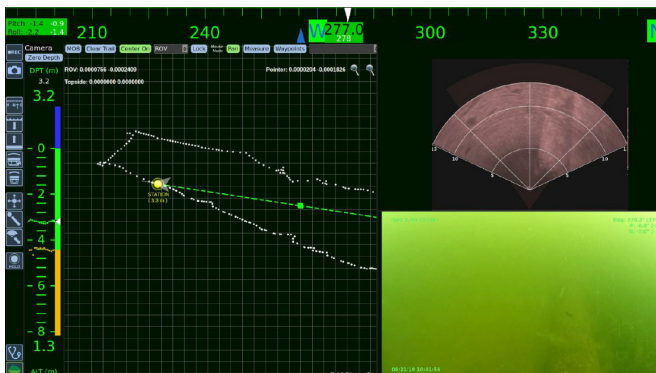
<b>Tether and data capacity</b>	Tether length	150 m loose and 350 on electric winch
	Diameter	16.5 mm
	Tether capabilities	6 x power conductors, 4 x SM fiber, 1 x shielded twisted pair
	Data capacity	up to 10 GBits/s at 1 Gb/s per user port
<b>Light and camera</b>	Number of lights	6
	Type of lights	teledyne 1500-B-LED, 1500 lumen dimmable LED
	Type and number of cameras	2 x GigE cameras supplied (1 x monochrome, 1 x colored), option for additional 2 x 3G HD-SDI or 10 x GigE vision / IP cameras
<b>Equipment</b>	Sonar	Simini 720ik
	Gyro c/w INS	Advanced Navigation MEMS gyro c/w Sublocus INS
	DVL	Nortek 1MHz DVL
	USBL	Sonardyne Mini Ranger USBL system incl. 2 x beacons and 2 x nano beacons
	Launch and recovery	Lock-latch system
	Tooling skid	fitted at standard
<b>Additional tooling</b>	Max payload	~ 21 kg
	Through frame lift	100 kg
	Expansion ports	10 x User connectors each supporting: variable 12V DC- 48V DC software configured power output gigabit ethernet RS232/422/RS485 (software selectable) time stamped data by 1 PPS TTL sync in, TTL sync out analog in $\pm$ 10V 16-bits, analog out $\pm$ 10V 12-bits IOS 5 function Orion manipulator
	Manipulator	



Manipulator



Application example: Ultra sonic thickness measurements



Pilot screen showing position, sonar and camera



Planning an auto gridline survey